



(AN ISO:9001:2008 CERTIFIED COMPANY)



INTEGRATED BIO-MEDICS & TECHNOLOGIES™

(A TEAM OF BIO-MEDICAL ENGINEERS)

No. 3, 2nd Floor, Bharathiar Road,
(Adjacent to State bank of Patiala), Near Lakshmi Mills Junction,
Pappanaickenpalayam,
Coimbatore - 641037, TAMILNADU, INDIA.

Phone : +91 422 438 8784

+91 422 438 8785

Mobile : +91 936 310 4452

+91 936 310 4498

E-mail : ibmtcbe@yahoo.co.in

Web : www.ibmtindia.com

EXERCISE THERAPY EQUIPMENT.

IBMT-EX-201 TRACTION TABLE



The fixed height upholstered traction table is ideal for horizontal cervical and lumbar traction. The top bed comes with a split top. The lumbar section rolls freely on ball bearing rollers for friction free lumbar pull. Cervical traction angle is controlled by vertical adjustment of the Machine mounting board. Complete with storage shelf(optional) and a flexion stool (optional).

IBMT-EX-202 SUSPENSION APPARATUS



Tubular steel construction frame. All welded steel rod mesh at the top for complete suspension, 6/12 hooks are provided on each side to hold suspension gear. Mesh facilitates suspension at any desired point in relation to the patient and as required in each individual case. Comes complete with suspension gear comprising 9 canvas slings, 8 single ropes with necessary hooks and cleats, four double pulley ropes, 18 graduated springs of different tension, 12 'S' hooks and 2 ankle straps. Oven baked finish. Couch shown in the picture does not come with this unit. If couch is required, it will be supplied extra on cost.

IBMT-EX-203 ARM, SHOULDER & CHEST EXERCISER (DOUBLE) / DR.MANNALS APPARATUS



Unit is made of Strong Wooden and M.S.construction. Wall mounted. This unit facilitates exercise of the upper limbs, simultaneously or alternatively, free and also resisted exercises can also be done. Stand with adjustable weights, pulleys and handle, specially designed for Simultaneous Arm, Shoulder and Chest exercises.

*Models are subject to change without prior notice.



(AN ISO:9001:2008 CERTIFIED COMPANY)



INTEGRATED BIO-MEDICS & TECHNOLOGIES

(A TEAM OF BIO-MEDICAL ENGINEERS)

No. 3, 2nd Floor, Bharathiar Road,
(Adjacent to State bank of Patiala), Near Lakshmi Mills Junction,
Pappanaickenpalayam,
Coimbatore - 641037, TAMILNADU, INDIA.

Phone : +91 422 438 8784

+91 422 438 8785

Mobile : +91 936 310 4452

+91 936 310 4498

E-mail : ibmtcbe@yahoo.co.in

Web : www.ibmtindia.com

IBMT-EX-204 TILTING TABLE – SPLIT TYPE / THERAPY PLINTH



Plinth mounted on a stout tubular steel frame fitted with heavy duty rubber shoes. The frame of the plinth is hinged at centre, but foam padded plinth is divided into two sections, permitting elevation and lowering as desired.

IBMT-EX-205 MULTI PURPOSE EXERCISE CHAIR



Main frame is made of strong tubular steel construction. This unit facilitates exercise of both upper & lower limbs, such as shoulder movement, quadriceps movement, free and also resisted exercises etc.

IBMT-EX-206 TILTING TABLE-MOTORISED



Electrically operated tilt table with foam padded top, provided with three straps to hold the patient. Heavy duty motor provides silent and smooth lifting action with push button control switches. Range of tilt is calibrated from 0-90 degrees. The table top is fitted on a heavy duty tubular steel frame with four wheels. Oven baked finish.

IBMT-EX-207 TILTING TABLE-MANUAL



Manually operated Tilt table with foam padded top is provided with three straps to hold the patient. The foam padded top can be tilted to standing position with worm gear arrangement. Range of tilt is calibrated from 0-90 degrees.

*Models are subject to change without prior notice.



(AN ISO:9001:2008 CERTIFIED COMPANY)



INTEGRATED BIO-MEDICS & TECHNOLOGIES™

(A TEAM OF BIO-MEDICAL ENGINEERS)

No. 3, 2nd Floor, Bharathiar Road,
(Adjacent to State bank of Patiala), Near Lakshmi Mills Junction,
Pappanaickenpalayam,
Coimbatore - 641037, TAMILNADU, INDIA.

Phone : +91 422 438 8784

+91 422 438 8785

Mobile : +91 936 310 4452

+91 936 310 4498

E-mail : ibmtcbe@yahoo.co.in

Web : www.ibmtindia.com

IBMT-EX-208 SHOULDER EXERCISER



Unit is fitted with resistance control mechanism. Fixed model & Height adjustable models are available.

IBMT-EX-209 ROWING MACHINE



Unit is provided with foam cushion seat which slides over a strong tubular frame. Unit is much useful the exercise of both lower limbs & upper limbs. Resistance of rowing handles can be varied depending on each individual.

IBMT-EX-210 MARINERS WHEEL-M.S./WOODEN



Unit is of steel / wood construction as per customer requirement. Unit is fitted with resistance control mechanism and is wall mounting type.

IBMT-EX-211 SLIDING SEAT (MS)



Unit is provided with foam cushion seat and backrest which slides over a strong tubular frame. Unit is much useful the exercise of both lower limbs & upper limbs. Resistance for lower limbs can be varied by adjusting the inclination position of the base frame.

IBMT-EX-212 ARMOUR EXERCISER / ARM, SHOULDER & CHEST EXERCISER (SINGLE)



Unit is made of Strong Wooden and M.S.construction. Wall mounted. This unit facilitates exercise of the upper limbs alternatively, free and also resisted exercises can also be done. Stand with adjustable weights, pulleys and handle, specially designed for Arm Shoulder and Chest exercises.

*Models are subject to change without prior notice.



(AN ISO:9001:2008 CERTIFIED COMPANY)



INTEGRATED BIO-MEDICS & TECHNOLOGIES™

(A TEAM OF BIO-MEDICAL ENGINEERS)

No. 3, 2nd Floor, Bharathiar Road,
(Adjacent to State bank of Patiala), Near Lakshmi Mills Junction,
Pappanaickenpalayam,
Coimbatore - 641037, TAMILNADU, INDIA.

Phone : +91 422 438 8784

+91 422 438 8785

Mobile : +91 936 310 4452

+91 936 310 4498

E-mail : ibmtcbe@yahoo.co.in

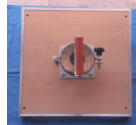
Web : www.ibmtindia.com

IBMT-EX-213 OVER HEAD PULLEY



Unit is made up of tubular frame with P.V.C. wheels and rope with handles - wall mounting. Frame is powder coated or painted as per customer requirement.

IBMT-EX-214 SUPINATOR & PRONATOR UNIT



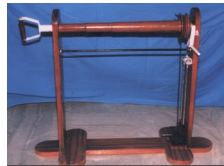
Unit is fitted with resistance control mechanism. Fixed model & Height adjustable models are available. Used for supination & pronation exercise of both hands with or without resistance control mechanism – wall mounting.

IBMT-EX-214-B ZIG-ZAG SUPINATOR PRONATOR



Bright laminated discs slide smoothly along colored wire maze, mounted on a laminated base. It offers a convenient way to build range of motion of arm, wrist, hand, and finger proficiency.

IBMT-EX-215 WRIST EXERCISER (STAND MODEL)



Made up of teak / seasoned wood stand with roller in 3 different dimensions fitted with iron trolley with weights and pulley for resistance control suitable for flexion and extension exercise of wrist and forearm. A handle is also provided for supination and pronation exercise. Floor / Stand Model.

IBMT-EX-216 WRIST EXERCISER (PORTABLE)



Made up of teak / seasoned wood stand with roller in 3 different dimensions .A Belt/knob resistance control suitable for flexion and extension exercise of wrist and forearm is provided . A handle is also provided for supination and pronation exercise. Table Top Model.

*Models are subject to change without prior notice.



(AN ISO:9001:2008 CERTIFIED COMPANY)



INTEGRATED BIO-MEDICS & TECHNOLOGIES™

(A TEAM OF BIO-MEDICAL ENGINEERS)

No. 3, 2nd Floor, Bharathiar Road,
(Adjacent to State bank of Patiala), Near Lakshmi Mills Junction,
Pappanaickenpalayam,
Coimbatore - 641037, TAMILNADU, INDIA.

Phone : +91 422 438 8784

+91 422 438 8785

Mobile : +91 936 310 4452

+91 936 310 4498

E-mail : ibmtcbe@yahoo.co.in

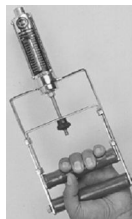
Web : www.ibmtindia.com

IBMT-EX-217 FINGER BOARD



Bright polished wood / plywood construction with stairway of 9 / 10 steps. The unit is useful for flexion and extension exercises of the finger

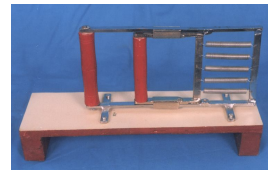
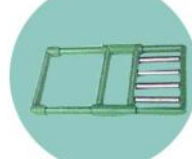
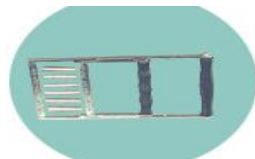
IBMT-EX-218 HAND DYNAMO METER



Indian & Imported Models are available. **Indian Model:** Single position Handles. Indication is by scale which has to be noted manually while testing hand grip.

Imported Model: Handle is adjustable with five positions to accommodate any hand size. Indicator remains at maximum reading until rest. Available with dial or digital gauges, and register up to 200 / 300 lbs.

IBMT-EX-219 FINGER GRIP EXERCISER



Metallic/Plastic frame grip exerciser. Gives heavy resistance with 4/5 detachable springs. The resistance can be graduated by removing or adding springs from minimum to maximum to increase the strength of intrinsic muscles of hand. Models with or without base are available.

IBMT-EX-220 FINGER EXERCISER



Different types & models are available which are helpful in increasing the strength of intrinsic muscles of fingers.

IBMT-EX-221 FINGER EXTENSOR EXERCISER



6" high foam padded with or without wooden box having two straps to hold hand fitted with 5 / 10 tension springs.

*Models are subject to change without prior notice.



(AN ISO:9001:2008 CERTIFIED COMPANY)



INTEGRATED BIO-MEDICS & TECHNOLOGIES™

(A TEAM OF BIO-MEDICAL ENGINEERS)

No. 3, 2nd Floor, Bharathiar Road,
(Adjacent to State bank of Patiala), Near Lakshmi Mills Junction,
Pappanaickenpalayam,
Coimbatore - 641037, TAMILNADU, INDIA.

Phone : +91 422 438 8784

+91 422 438 8785

Mobile : +91 936 310 4452

+91 936 310 4498

E-mail : ibmtcbe@yahoo.co.in

Web : www.ibmtindia.com

IBMT-EX-222 HAND EXERCISER



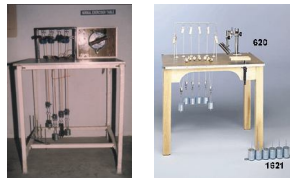
Consists of two chrome plated / powder coated bars, one in a fixed position having two plastic grips and the other one turning around a centre pin, having one hand grip and one revolving sleeve. Distance between the bars is adjustable.

IBMT-EX-223 FINGER GYM EXERCISE BOARD



Laminated exercise board with several holes for fixing pegs and springs. Comes with one finger disc, one roller with three sets of springs. This unit permits active flexion and extension exercise of the fingers. A shelf is provided to store accessories.

IBMT-EX-224 HAND, WRIST & FOREARM EXERCISER TABLE / CIRCUMDUCTOR TABLE



Steel tubular table fitted with laminated wooden top forearm support provided two handles for forearm exercise. Six set weights resistance is provided with this unit and weight storage bracket fitted under the table in a corner. Exercise to all muscles and joints of hand and forearm supination, pronation and wrist rotation with or without resistance.

IBMT-EX-225 SHOULDER ABDUCTION LADDER



Teak/seasoned wood unit with 20/30/40 steps, each wide 2 to 2 ½ inch and approx 1 ½ inch high. Naturally finished.

IBMT-EX-226 RE-EDUCATION TABLE



4' x 3' laminated board is mounted on sturdy frame. A cutout enables patient to sit close to the table, providing exercises in horizontal plane for shoulder & elbow with the help of skates.

*Models are subject to change without prior notice.



(AN ISO:9001:2008 CERTIFIED COMPANY)



INTEGRATED BIO-MEDICS & TECHNOLOGIES™

(A TEAM OF BIO-MEDICAL ENGINEERS)

No. 3, 2nd Floor, Bharathiar Road,
(Adjacent to State bank of Patiala), Near Lakshmi Mills Junction,
Pappanaickenpalayam,
Coimbatore - 641037, TAMILNADU, INDIA.

Phone : +91 422 438 8784

+91 422 438 8785

Mobile : +91 936 310 4452

+91 936 310 4498

E-mail : ibmtcbe@yahoo.co.in

Web : www.ibmtindia.com

IBMT-EX-227 STATIC CYCLE



Indian / Imported Models Available.

Indian Model: With adjustable handle bar and seat having mechanical resistance control device and speedometer.

Imported Model: Sitting Type (with or without backrest), magnetic resistance, 8 level tension adjustable.

IBMT-EX-228 SKATER ROLLER



Bright chrome plated / powder coated skates fitted with ball bearing castors. Comes with detachable handle for exercising on the table or exercise board for hand, arm and shoulder exercises.

IBMT-EX-229 PEDO CYCLE



Tubular steel construction, fitted with resistance control device. For reactivation and mobilization of the joints and for strengthening the leg muscles. Suitable for patient unable to sit on a regular exercise bicycle.

IBMT-EX-230 QUADRICEPS EXERCISE TABLE



The unit consists of foam top mounted on tubular frame fitted with chrome plated / powder coated lever set. By changes in the angle between the two arms maximum or minimum resistance can be given at any point in the range with 5 / 6 kgs detachable weights.

*Models are subject to change without prior notice.



(AN ISO:9001:2008 CERTIFIED COMPANY)



INTEGRATED BIO-MEDICS & TECHNOLOGIES™

(A TEAM OF BIO-MEDICAL ENGINEERS)

No. 3, 2nd Floor, Bharathiar Road,
(Adjacent to State bank of Patiala), Near Lakshmi Mills Junction,
Pappanaickenpalayam,
Coimbatore - 641037, TAMILNADU, INDIA.

Phone : +91 422 438 8784

+91 422 438 8785

Mobile : +91 936 310 4452

+91 936 310 4498

E-mail : ibmtcbe@yahoo.co.in

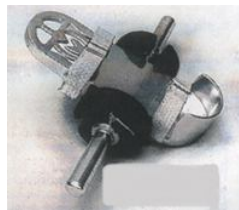
Web : www.ibmtindia.com

IBMT-EX-231 QUADRICEPS BOARD



Made of polished teak / seasoned wood base with slots and two hinged movable board which can be set at various angles and permits the patient to do quadriceps exercises.

IBMT-EX-232 QUADRICEPS BOOT WITH WEIGHT



Painted black finish aluminium moulded / M.S. powder coated boot. Comes with a bar and collars to hold weights, and two straps to hold foot. Suitable for quadriceps and knee exercises (with or without weights).

IBMT-EX-233 HEEL STRETCHER



The heel unit fitted on a hard laminated wooden / M.S. powder coated base helps the patient to exercise while sitting on a chair. This can be used for stretching the heel and tarsus muscle group.

IBMT-EX-234 ANKLE EXERCISER



Mounted on laminated wooden / M.S. powder coated base for single foot with tension springs fitted for tension. Also available for both feet to be exercised simultaneously.

IBMT-EX-235 ANKLE & LEG EXERCISER



Aluminium / M.S. construction with cast iron / M.S. base. Specially designed and developed to permit a full range of motion in eversion, inversion, dorsi-flexion and plantar flexion. Graded resistance of these motions is made possible by the addition of weights to the weight pans.

*Models are subject to change without prior notice.



(AN ISO:9001:2008 CERTIFIED COMPANY)



INTEGRATED BIO-MEDICS & TECHNOLOGIES™

(A TEAM OF BIO-MEDICAL ENGINEERS)

No. 3, 2nd Floor, Bharathiar Road,
(Adjacent to State bank of Patiala), Near Lakshmi Mills Junction,
Pappanaickenpalayam,
Coimbatore - 641037, TAMILNADU, INDIA.

Phone : +91 422 438 8784

+91 422 438 8785

Mobile : +91 936 310 4452

+91 936 310 4498

E-mail : ibmtcbe@yahoo.co.in

Web : www.ibmtindia.com

IBMT-EX-236 FOOT PLACEMENT LADDER



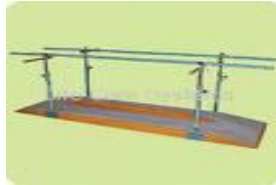
Wooden floor ladder, with adjustable dividers offers various walking patterns. Steps may be of equal size and alternately placed for right-left progression.

MATERIAL: Beams and dividers made of Teak / seasoned wood.

SIZE: 8' long x 2 ¼' wide.

FINISH: Teak / seasoned wood finish. Adjustable divider-bars finished in natural finish / different enamel colors.

IBMT-EX-237 PARALLEL BAR



Available in two models – with platform or without platform.

Wooden platform fitted with anti-slip rubber mat and bar. Height can be adjustable Width adjustable (optional).

Length of platform for Adult: 10' long.

Length of platform for Children: 6' to 8' long as per requirement.

IBMT-EX-238 POSTURE CORRECTING MIRROR WITH OR WITHOUT STAND



With stand 4' x 2' or 6' x 2' mirror fitted with teakwood frame mounted on tubular stand and without stand 6' x 2' mirror fitted with teakwood frame wall mounting.

IBMT-EX-239 WOBBLE BOARD



Made of polished teak / seasoned wood base & hardwood top fixed with anti-slip rubber matting, painted finish. Different sizes available for Adult & Children and also as per requirement.

*Models are subject to change without prior notice.



(AN ISO:9001:2008 CERTIFIED COMPANY)



INTEGRATED BIO-MEDICS & TECHNOLOGIES

(A TEAM OF BIO-MEDICAL ENGINEERS)

No. 3, 2nd Floor, Bharathiar Road,
(Adjacent to State bank of Patiala), Near Lakshmi Mills Junction,
Pappanaickenpalayam,
Coimbatore - 641037, TAMILNADU, INDIA.

Phone : +91 422 438 8784

+91 422 438 8785

Mobile : +91 936 310 4452

+91 936 310 4498

E-mail : ibmtcbe@yahoo.co.in

Web : www.ibmtindia.com

IBMT-EX-240 EXERCISE STAIR CASE (STRAIGHT TYPE)



Straight type with gradually increasing steps on one side & equal steps on the other & square platform at the top end. Provided with two pair of side bars made of teak / seasoned wood for adults as well as children, steps covered with anti-slip rubber matting.

IBMT-EX-241 EXERCISE STAIR CASE (CORNER TYPE)



Corner type with gradually increasing steps on one side & equal steps on the other & square platform at the top end. Provided with two pair of side bars made of teak / seasoned wood for adults as well as children, steps covered with anti-slip rubber matting.

IBMT-EX-242 WOODEN RAMPS & CURBS



The ramp has steps, which store under the platform and easily slide in and out with handle grasps. Natural wood / plywood finish with anti-slip rubber matting for safety tread on ramp.

IBMT-EX-243 NESTED CLIMBING STOOL SET



Set of four with gradual increase in height which offer a small climbing surface with anti-slip rubber mat covered wood stools.

IBMT-EX-244 GONIO METER HAND & FINGER



A simple and accurate device to measure joint's range of motion of hand & fingers. Stainless steel / Aluminium construction. Two 180 degree scales are provided in opposite direction for convenient reading of all angles. Supplied in a pouch. Individually also available.

*Models are subject to change without prior notice.



(AN ISO:9001:2008 CERTIFIED COMPANY)



INTEGRATED BIO-MEDICS & TECHNOLOGIES™

(A TEAM OF BIO-MEDICAL ENGINEERS)

No. 3, 2nd Floor, Bharathiar Road,
(Adjacent to State bank of Patiala), Near Lakshmi Mills Junction,
Pappanaickenpalayam,
Coimbatore - 641037, TAMILNADU, INDIA.

Phone : +91 422 438 8784

+91 422 438 8785

Mobile : +91 936 310 4452

+91 936 310 4498

E-mail : ibmtcbe@yahoo.co.in

Web : www.ibmtindia.com

IBMT-EX-245 WRIST CIRCUMDUCTOR



Cast iron wheel mounted on a laminated wooden base. Has a small adjustable handle fitted to the wheel and provided with resistance control. A hallowed foam padded box having two straps to hold forearm is fitted over the base in front of the wheel for wrist circumduction.

IBMT-EX-246 MANUAL CERVICAL TRACTION / IBMT-EX-249 PELVIC TRACTION



Cervical Traction Kit contains complete equipment to provide uniform and controlled traction to cervical region. Consists of Cervical collar, spreader bar, traction pulley and traction cord and weight bag.

Pelvic Traction Kit contains complete equipment to provide uniform and controlled traction to lumbo-sacral and lower thoracic regions. Consists of PT belt, spreader bar, traction pulley and traction cord and weight bag

IBMT-EX-247 FINGER GRIP EXERCISER WITH BASE



Metallic frame grip exerciser comes with a base. Provides heavy resistance with 5 detachable springs. The resistance can be graduated by removing or adding springs from minimum to maximum to increase the strength of intrinsic muscles of hand.

IBMT-EX-248 WALL BARS



Wall bar single section, M.S. / Teak / seasoned wood constructed sturdy frame size: 2.75' / 3' wide x 8' high, finished in M.S. powder coated / natural wood polish. Unit is provided with 2 / 4 wall brackets for fitting to the wall.

*Models are subject to change without prior notice.



(AN ISO:9001:2008 CERTIFIED COMPANY)



INTEGRATED BIO-MEDICS & TECHNOLOGIES™

(A TEAM OF BIO-MEDICAL ENGINEERS)

No. 3, 2nd Floor, Bharathiar Road,
(Adjacent to State bank of Patiala), Near Lakshmi Mills Junction,
Pappanaickenpalayam,
Coimbatore - 641037, TAMILNADU, INDIA.

Phone : +91 422 438 8784

+91 422 438 8785

Mobile : +91 936 310 4452

+91 936 310 4498

E-mail : ibmtcbe@yahoo.co.in

Web : www.ibmtindia.com

IBMT-EX-250 HIP CIRCUMDUCTOR



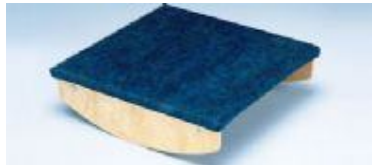
Useful for the complete circumduction of hip joint, rotation plate is tilted at an angle over the angular frame to avoid knee bending. Standing base is made of strong M.S.Frame. Diameter of circumduction is adjustable with the help of knob.

IBMT-EX-251 WRIST ROLL



M.S. / aluminum roll in three different diameters fitted to wall board with adjustable friction control mechanism, controllable from zero to maximum for flexion and extension exercises of wrist and forearm. M.S.Parts are powder coated.

IBMT-EX-252 VESTIBULAR BOARD



Made of hardwood. Painted finish. Top fitted with anti slip rubber mat. Rectangular Shaped

IBMT-EX-253 MULTI-ACTIVATOR



A unique exerciser for the lower and upper extremities. The pedaling movement can be carried out by either Arms or Legs. It can be fixed & adjusted in matter of seconds to limb size & to the degree of flexion or extension.

IBMT-EX-254 THERAPY MAT TABLE / MANIPULATION PLATFORM.



Unit is of teak / seasoned / plywood construction. The therapy table / manipulation platform is of 6' x 6' size. 2"/3"/4" medium-density mattress is used over the platform. Standard height of the platform is around 18". Customer specified size and height can also be supplied.

*Models are subject to change without prior notice.



(AN ISO:9001:2008 CERTIFIED COMPANY)



INTEGRATED BIO-MEDICS & TECHNOLOGIES™

(A TEAM OF BIO-MEDICAL ENGINEERS)

No. 3, 2nd Floor, Bharathiar Road,
(Adjacent to State bank of Patiala), Near Lakshmi Mills Junction,
Pappanaickenpalayam,
Coimbatore - 641037, TAMILNADU, INDIA.

Phone : +91 422 438 8784

+91 422 438 8785

Mobile : +91 936 310 4452

+91 936 310 4498

E-mail : ibmtcbe@yahoo.co.in

Web : www.ibmtindia.com

IBMT-EX-255 SHOULDER ABDUCTION BAR RACK



Teak/seasoned wood unit with 10 steps naturally finished and a M.S. powder coated / seasoned wood abductor rod. Useful for abduction exercise of both the shoulders simultaneously.

IBMT-EX-256 EXERCISE MATS



Exercise mats of various sizes

1. Foldable mat - closed cell material - high insulation - no absorption of water - great tensile strength - lightweight - skin-friendly - non-skid and flat - environmental friendly - for fitness, therapy.
2. All purpose lightweight mat of high density foam protects body during exercises. The floor mat size 4' x 6' x 4' is covered with nylon.

IBMT-EX-257 POWER WEB



The Power-Web - 14" is the ultimate strengthening and rehab tool for the hand, wrist and forearm. The Power-Web is perfect for developing strength, dexterity and range of motion.

IBMT-EX-258 EGGCERSIZER



Eggcizer in latex – available in 3 / 4 different strength / resistance

IBMT-EX-259 GRIPPY



Grippy / hand trainer made of foam polyester - shaped to fit the hand.

**** ANY OTHER EXERCISE THERAPY PRODUCT REQUIRED BY YOU NOT MENTIONED HEREWITH ALSO CAN BE SUPPLIED. KINDLY FORWARD US YOUR VALUED REQUIREMENTS.***

*Models are subject to change without prior notice.